



# Setting Up Your Exodus Team

2024/25



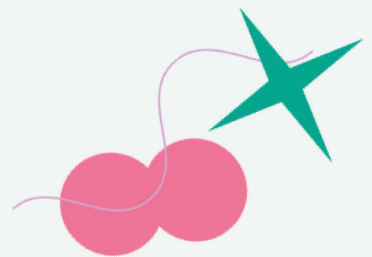
**'I came so that they can  
have real and eternal life,  
more and better life than  
they ever dreamed of.'  
John 10:10**

# **No-one who chooses to follow Jesus ever misses out**

**The vision of Exodus is to see generations of young people boldly following Jesus and becoming lifelong disciple makers.**

Exodus teams have served young people and communities around the world for over 25 years and this booklet outlines all you need to know about setting out to lead, host or run a team.

Thank you for sharing the adventure of making disciples who make disciples.



# The Team Journey

An Exodus team is a 6 month journey beginning with regular small group meetings, a residential along the way and finishing with a ministry placement.

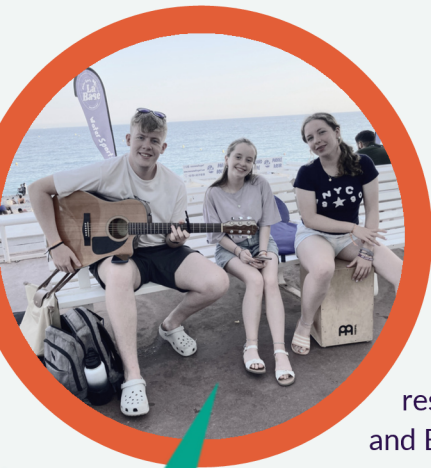
## 1. Team Meetings

**Groups prepare by meeting weekly from February - June.**

They complete 16 small group sessions focusing on fun, discipleship, team building and ministry preparation. Team meetings follow one of our four courses and usually last around 2 hours.

My team experience has had a massive impact on my life and walk with Jesus. I've seen Jesus work in and through our team and made new and genuine friendships that will last a long time!

**Exchange team member to Moldova**



## 2. Ministry Placements

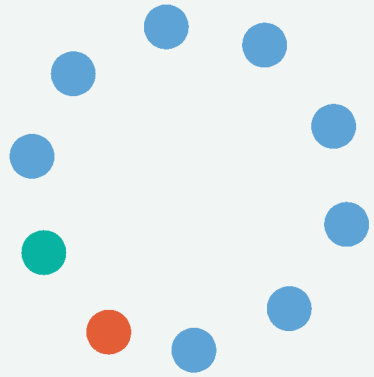
**Teams serve alongside a local or international host for a 10-14 day summer ministry placement.**

Most placements begin with a 48 hour residential 'launch' full of fun, ministry preparation and Bible engagement alongside other Exodus teams.

Groups then move to their host to serve most often in kids & youth ministry, community outreach, church services and practical work.

# Roles

## YOUR TEAM



### THE TEAM LEADER

Disciples group members and is responsible for the team.

- A committed follower of Christ (21+).
- Passionate about young people developing their relationship with God.
- Someone who sets an example in words, actions, love, faith and purity.

### CO-WORKER

**Supports the leader in discipling the group.**

- A committed follower of Christ (18+).
- Able to work as part of a team and compliment the leader's gifts and energy.

### GROUP MEMBERS

**Participates in team meetings & ministry placement.**

- 3-10 individuals aged 15-25.
- At a similar spiritual stage.

## SUPPORT

### TEAM MANAGER

An Exodus point person who supports leaders with information, advice and accountability.

### HOST

A trusted partner and ministry leader who cares for the team and sets up their daily placement programme.

### OPERATIONS TEAM

The Exodus office who will process applications and manage finance, insurance, admin and logistics.

# Church & Partner Teams

In the past 10 years Exodus have worked alongside 100+ churches, schools and youth centres to help them deliver a team experience in their local setting.

## Church/Partner Organisation Role

- Recruit a suitable team leader & co-worker(s).
- Complete a partner agreement with Exodus.
- Launch and advertise the team to recruit team members from your setting.
- Support the group through prayer, encouragement, fundraising, feedback and ministry opportunities.
- Ensure the team meets its financial commitments to Exodus.
- Provide public liability insurance for all preparation activities before the team travels.



“Over 30 of our young people have been involved in Exodus Teams and for many they have have been a springboard for them to grow in faith, serve in ministry back home and feel more connected to their local church.”

Johnny Bell  
Director of Youth & Family Ministry, Saintfield  
Road Presbyterian

# Team Courses

Each team follows one of four courses during their team meetings.



Year 11+

We want to see young people find a community that builds trust, engages in discussion and explores life's biggest questions.

Year 11+

We want to see young believers make the exchange from 'my way to His way' and discover the fullness of life that is found in dying to self and following Jesus.



Year 13+ (or Y12 if prev Ex-change Team)

We want to see young believers transformed 'from the inside out' and experience the distinctive life that flows from the heart and out through our lives when we choose to follow Jesus.



Year 14+

We want to see committed followers shift from 'my walk to our walk' and respond obediently and intentionally to the call to make disciples.



# Team Meetings

Each of the courses are made up of a range of key building blocks which work together to form each small group session.



## Body Builders

Fun games, activities or conversation starters to help people relax and to build community.



## Video & Discussion

Short talks & response activities which present key ideas and encourage engagement & growth.



## Prayer Focus

Creative activities to encourage individual and group prayer.



## Rhythms Journal

Group members (inc leaders) complete weekly devotional sessions to help them pause, read Scripture, reflect and respond.



## Residential

The team spends 1 or 2 nights away, allowing time to build relationships, develop fun and go deeper together.

# Placement Destinations



## HUNGARY & SLOVAKIA

Partnering with a local church to run kids clubs and outreach,  
PC £645 FR £415



## MOLDOVA

Supporting church planting & outreach with local believers.  
PC £645 FR £395



## N.I & ROI

Partnering with local churches and ministries to engage kids, young people and communities.  
PC £160 FR £120



## Scotland

Engaging with kids, young people and communities with a local church.  
PC £275 FR £225



## SPAIN

Partnering with churches to facilitate outreach to all age groups.  
PC £585 FR £365 )



## FRANCE

Local outreach, kids club and church services.  
PC £595 FR £375



## SOUTH AFRICA

Serving local communities through sport, youth work and evangelism.  
PC £1395 FR £445



## ROMANIA

Practical ministry, delivering food parcels, kids clubs and church services.  
PC £615 FR £375

Costs are from 2024 and may increase slightly  
PC = Personal Contribution.

The amount each team member must pay to secure their place.

FR = Fundraising. Leaders and team members take part in personal and group activities to reach the team target.



# Exodus Support



## 1. PREP & TEAM MEETINGS

- **A Team web page with key details, application form and links.**
- Training for leaders and co-workers
  - Sat 11th January - disciple-making and small groups
  - Sat 17th May - summer preparation.
- **Resources for team meetings & placement preparation.**
- A Team Manager who'll provide pastoral support and advice.
- **Online financial systems for payments & fundraising.**
- Public Liability Insurance for residentials, team meetings and fundraisers (excludes partner teams).
- **Communication with host to plan placement and ministry opportunities.**
- Processing of all applications, medical forms and police checks, booking transport & accommodation and provision of team finance tracking.
- **Annual Commissioning Service.**

## 2. PLACEMENT

- **Day-plan and preparation guide.**
- Kid's club and youth ministry materials.
- **24/7 on call support.**
- Full travel insurance, public liability and tour liability for the duration of the placement.
- **ATOL Protection for every team involving a flight.**

## 3. FOLLOWING PLACEMENT

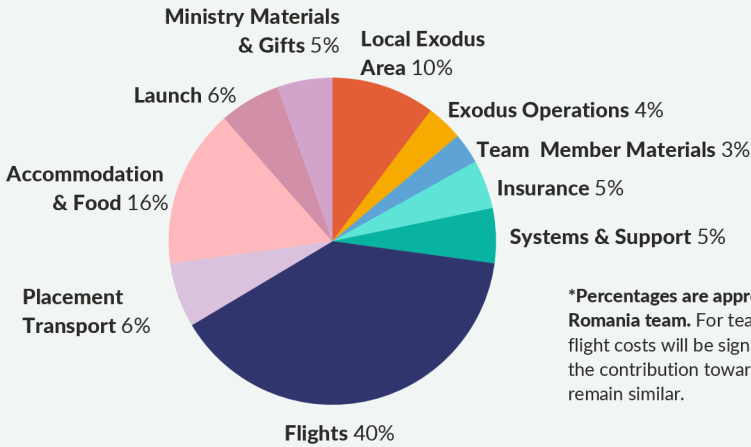
- **A leader, co-worker and host review.**
- A celebration event.
- **An invitation towards further discipling opportunities through a local Exodus centre.**



# Finance

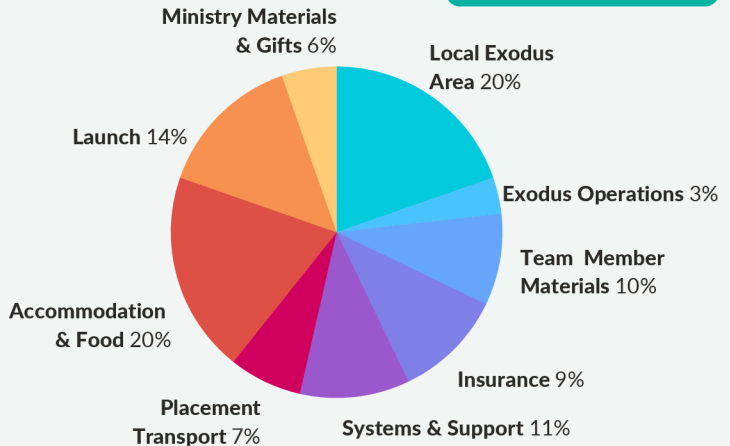
The total cost of each team covers preparation, training and materials as well as transport, food and accommodation, insurance, support and project costs. It also includes a contribution towards the Exodus staff costs of running the teams.

## International Teams\*



\*Percentages are approximate and based on a Romania team. For teams going further the flight costs will be significantly higher, however, the contribution towards Exodus and host will remain similar.

## UK & Ire Teams



# Finance

## FINANCIAL TIPS

- **Team leaders are required to lodge money and should be committed to good stewardship of finances and resources.**
- **Team members & leaders will receive an invoice for their personal contributions for online payment.**
  - A 40% deposit should be paid by the end of February with the final balance to be paid by the end of April.
  - Leaders and Co-workers receive a 25% discount on their personal contribution if they have paid the deposit on time\*.
  - There is a bursary available (up to £150) to assist team members who cannot afford the Personal Contribution.
- **Fundraising donations**
  - Are made online or by cash or cheque (payable to 'Exodus') and given to the team leader.
- **Partner Teams**
  - Are asked for a £500 deposit to secure their team place and enable Exodus to seek to make early flight bookings.
  - Leader discounts are not automatically set up but can be agreed in advance.
  - Non-travellers can join with a small cost added to group fundraising



# Expectations for Leaders

Exodus exists to see generations of young people boldly following Jesus and becoming lifelong disciples makers. As a member of the Evangelical Alliance we subscribe to their basis of faith. Our mission is to help young people discover life in Jesus, follow His teaching & example and live holy and transformative lives in the midst of contemporary culture. In light of Scripture and Exodus' mission, vision and history we affirm that:

- 1. Every Young Person is made in the image of God and we strive to offer each one the highest standards of love, care and compassion.**
- 2. Jesus is Good News for Young People and He has commissioned His followers to make disciples. Therefore we seek to create opportunities to let others taste and see that God is good, invite them to choose to follow Jesus, continue to grow in faith and in turn pass that faith on.**
- 3. Disciples are invited to grow in maturity and so we seek to love God, follow Jesus and respond to the Holy Spirit through regular prayer, Bible engagement and participating in a local church.**
- 4. God created humanity male and female. Our bodies matter to Him, are essential to our nature, intrinsic to our identity and impact others. Therefore, we strive in private, in public and online, to live holy lives that honour him and reflect His character and to avoid behaviour that would negatively impact those we disciple.**
- 5. Sexual activity is a good gift from God that belongs exclusively within marriage between one man and one woman. God calls us to faithfulness within marriage and celibate singleness outside of it. Therefore we are committed to helping young people navigate sex and sexuality well, recognising the destructive impact of pornography.**
- 6. Alcohol, tobacco and narcotics pose a threat to the wellbeing and development of young people. Therefore we affirm a responsible approach to alcohol through abstinence or a commitment to consuming alcohol in moderation and with self-control always mindful of our influence, particularly on young people. We also refrain from using tobacco, vaping products or narcotic substances.**
- 7. God made the earth and entrusted humanity as its stewards and so we take seriously our responsibility to care for and cultivate His good creation.**

Scan to read the full  
version of the Exodus  
Ethos



# Hosting a Team

By welcoming a group of enthusiastic and prepared young people for 7-10 days, hosts can reach others in their community, energise local believers and play a part in the faith journey of the team.

Sept-Oct

## Request

Create a proposal for ministry, accommodation & transport using team request form.

Mid Nov

## Refine

Agree details and costs with Exodus before team is advertised.

Mid Dec

## Recruit

Exodus advertises the team for young people to sign up.

Early Mar

## Confirm

Exodus confirms the team has been recruited and summer prep commences.

Late Apr

## Plan

Write preparation guide and day plan for the team.

May-June

## Prepare

Finalise the necessary logistics inc. food, accommodation, transport, ministry.

July-Aug

## Host

Welcome the team and providing ministry, food, accommodation & support.

Sept

## Review

Provide feedback for Exodus on the process.

**TEAM  
REQUEST  
FORM**

[exodusonline.org.uk/  
host-a-team](https://exodusonline.org.uk/host-a-team)



# Plan Your Team

Use this page to help you imagine what your Exodus team could look like, consider who'll be involved and spot where the gaps are.

Small Group Course: \_\_\_\_\_

Team Leader Name: \_\_\_\_\_

Co-worker Name(s): \_\_\_\_\_

Team members: \_\_\_\_\_  
\_\_\_\_\_

Meeting Location: \_\_\_\_\_

Meeting Night: \_\_\_\_\_

Potential Placement: \_\_\_\_\_

Placement Dates: \_\_\_\_\_

## NEXT STEPS

### Partner Teams

Once you have your details clear, pass them on to the Exodus staff member who is helping you set up the team and we'll send you a partner agreement and an invoice for a £500 deposit to confirm.

### Leaders

Apply online, complete Access NI & record key dates.



# Key Dates



Be sure to put these important dates  
in your calendar!





**exodusonline.org.uk**

hello@exodusonline.org.uk

02892 661220

@exodusdisciples

