



# Setting Up Your Exodus Team



**'I came so that they can  
have real and eternal life,  
more and better life than  
they ever dreamed of.'**

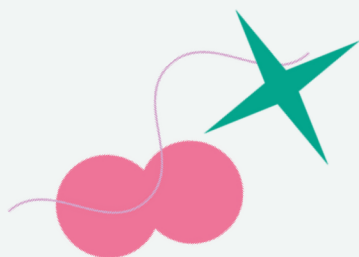
**John 10:10**

# **No-one who chooses to follow Jesus ever misses out**

**The vision of Exodus is to see generations of young people boldly following Jesus and becoming lifelong disciple makers.**

Exodus teams have served young people and communities around the world for over 25 years and this booklet outlines all you need to know about setting out to lead, host or run a team.

Thank you for sharing the adventure of making disciples who make disciples.



# The Team Journey

An Exodus team is a 6 month journey beginning with regular small group meetings, a residential along with way and finishing with a ministry placement.

## 1. Team Meetings

**Groups prepare by meeting weekly from February - June.**

They complete 16 small group sessions focusing on fun, discipleship, team building and ministry preparation. Team meetings follow one of our four courses and usually last around 2 hours.

"My team was life changing. I made friends for life and learned more about myself and about God"

**Rachel, Ex-press team to India**



## 2. Ministry Placements

**Teams serve alongside a local or international host for a 10-14 day summer ministry placement.**

Most placements begin with a 48 hour residential 'launch' full of fun, ministry preparation and Bible engagement alongside other Exodus teams.

Groups then move to their host to serve most often in kids & youth ministry, community outreach, church services and practical work.

# Team Roles



## LEADER

**Disciples group members and is responsible for the team.**

- A committed follower of Christ (21+).
- Passionate about young people developing their relationship with God.
- Someone who sets an example in words, actions, love, faith and purity.

## CO-WORKER

**Supports the leader in discipling the group.**

- A committed follower of Christ (18+).
- Able to work as part of a team and compliment the leader's gifts and energy.

## GROUP MEMBERS

**Participates in team meetings & ministry placement.**

- 3-10 individuals aged 15-25.
- At a similar spiritual stage.

## TEAM MANAGER

An Exodus point person who supports leaders with information, advice and accountability.

## OPERATIONS TEAM

The Exodus office will process applications and manage finance, admin and logistics.

## HOST

A trusted partner and ministry leader who cares for the team and sets up their daily placement programme.

# Church & Partner Teams

In the past 10 years Exodus have worked alongside 100+ churches, schools and youth centres to help them deliver a team experience in their local setting.

## Church/Partner Organisation Role

- Recruit a suitable team leader & co-worker(s).
- Complete a partner agreement with Exodus.
- Launch and advertise the team to recruit team members from your setting.
- Support the group through prayer, encouragement, fundraising, feedback and ministry opportunities.
- Ensure the team meets its financial commitments to Exodus.
- Provide public liability insurance for all preparation activities before the team travels.



"Over 20 of our young people have been involved in Exodus Teams and for many they have have been a springboard for them to grow in faith, serve in ministry back home and feel more connected to their local church."

Johnny Bell  
Director of Youth & Family Ministry, Saintfield  
Road Presbyterian

# Team Courses

Each team follows one of four courses during their team meetings.



## Discovering the Christian Life 15+

"Come, and you will see." So they went and saw where he was staying, and they spent that day with him.

**John 1:38 - 39**

## Going Deeper as a Disciple 15+

"Whoever wants to be my disciple must deny themselves and take up their cross and follow me."

**Mark 8:34**



## Developing a Life of Ministry 17+

"The harvest is plentiful, but the workers are few. Ask the Lord of the harvest, therefore, to send out workers into his harvest field"

**Luke 10:2**



## Becoming a Disciple-Maker 18+

"Therefore go and make disciples of all nations, baptising them in the name of the Father and of the Son and of the Holy Spirit, and teaching them to obey everything I have commanded you."

**Matthew 28:19-20**



# Team Meetings

Each of the courses are made up of a range of key building blocks which work together to form each small group session.



## Body Builders

Fun games, activities or conversation starters to help people relax and to build community.



## Video & Discussion

Short talks & response activities which present key ideas and encourage engagement & growth.



## Prayer Focus

Creative activities to encourage individual and group prayer.



## Rhythms Journal

Group members (inc leaders) complete weekly devotional sessions to help them pause, read Scripture, reflect and respond.



## Residential

The team spends 1 or 2 nights away, allowing time to build relationships, develop fun and go deeper together.

# Placement Destinations



## SPAIN

**Partnering with churches to facilitate outreach to all age groups.**

PC £545 FR £350 (approx)



## HUNGARY

**Kids clubs and outreach partnering with a local church.**

PC £595 FR £350 (approx)



## SLOVAKIA

**Outreach to a community through a kids club and practical service.**

PC £595 FR £350 (approx)



## MOLDOVA

**Supporting church planting & outreach with local believers.**

PC £595 FR £350 (approx)



## SOUTH AFRICA

**Serving local communities through sport, youth work and evangelism.**

PC £1245 FR £450 (approx)



## N.I & ROI

**Partnering with local churches and ministries to engage kids, young people and communities.**

PC £160 FR £120 (approx)



## ROMANIA

**Practical ministry, delivering food parcels, kids clubs and church services.**

PC £545 FR £350 (approx)



## Scotland

**Engaging with kids, young people and communities with a local church.**

PC £275 FR £225 (approx)

PC = Personal Contribution. The amount each team member must pay to secure their place.  
FR = Fundraising. Leaders and team members take part in personal and group activities to reach the team target.  
See p10 for more.



# Exodus Support



## 1. PREP & TEAM MEETINGS

- **A Team web page with key details, application form and links.**
- Training for leaders and co-workers
  - Sat 13th January – disciple-making and small groups
  - Sat 18th May – summer preparation.
- **Resources for team meetings & placement preparation.**
- A Team Manager who'll provide pastoral support and advice.
- **Online financial systems for payments & fundraising.**
- Public Liability Insurance for residentials, team meetings and fundraisers (excludes partner teams).
- **Communication with host to plan placement and ministry opportunities.**
- Processing of all applications, medical forms and police checks, booking transport & accommodation and provision of team finance tracking.
- **Annual Commissioning Service.**

## 2. PLACEMENT

- **Day-plan and preparation guide.**
- Kid's club and youth ministry materials.
- **24/7 on call support.**
- Full travel insurance, public liability and tour liability for the duration of the placement.
- **ATOL Protection for every team involving a flight.**

## 3. FOLLOWING PLACEMENT

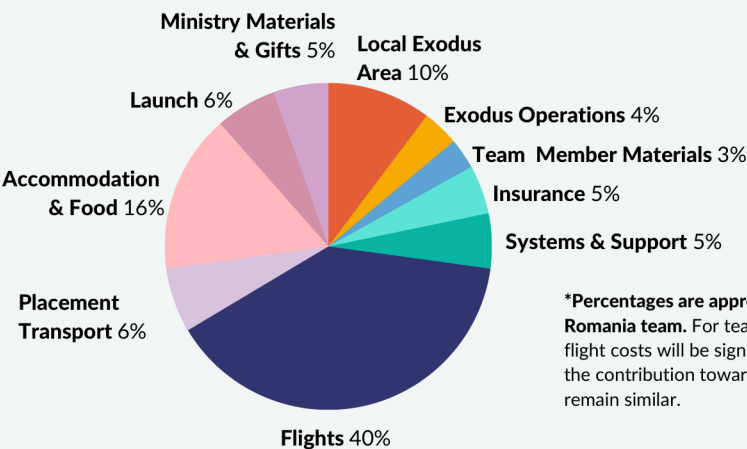
- **A leader, co-worker and host review.**
- A celebration event.
- **An invitation towards further discipling opportunities through a local Exodus centre.**



# Finance

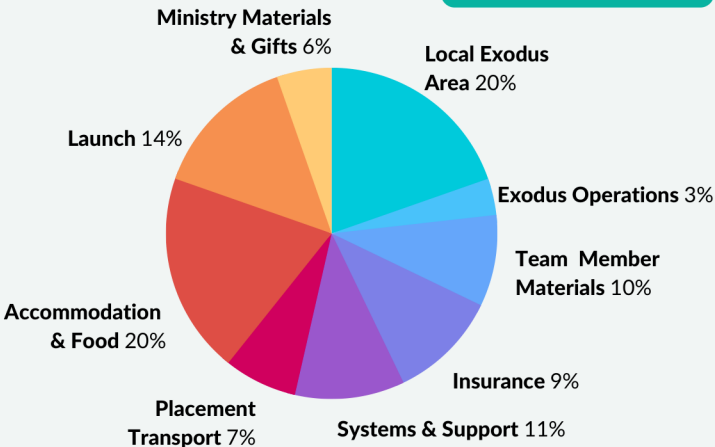
The total cost of each team covers preparation, training and materials as well as transport, food and accommodation, insurance, support and project costs. It also includes a contribution towards the Exodus staff costs of running the teams.

## International Teams\*



\*Percentages are approximate and based on a Romania team. For teams going further the flight costs will be significantly higher, however, the contribution towards Exodus and host will remain similar.

## UK & Ire Teams



# Finance

## FINANCIAL TIPS

- **Team members & leaders will receive an invoice for their personal contributions for online payment.**
  - A 40% deposit should be paid by the end of February with the final balance to be paid by the end of April.
  - Leaders and Co-workers receive a 25% discount on their personal contribution if they have paid the deposit on time\*.
  - There is a bursary available (up to £150) to assist team members who cannot afford the Personal Contribution\*.
- **Fundraising donations can also be made using TotalGiving (set up at training) or by cash or cheque (made payable to 'Exodus') and given to the team leader.**

\* (excludes partner teams)



# Expectations for Leaders

**Exodus team leaders and co-workers represent Exodus to hundreds of young people, parents, churches and partners around the world and therefore they are expected to:**

- 1. Be passionately pursuing a growing relationship with Jesus.**
2. Prepare for and deliver the weekly sessions with care and creativity.
- 3. Demonstrate integrity and responsibility when overseeing the necessary admin and finances.**
4. Ensure all contact with young people follows the child protection code of good practice and prioritises their health and safety.
- 5. Accept the decisions of those in authority and support the values and ethos of Exodus.**
6. Thoughtfully and prayerfully consider their position in relation to alcohol, embracing either; a position of abstinence from alcohol or committing to consuming alcohol in moderation and with self-control.
- 7. Choose carefully the venues they visit and avoid things that would conflict with the ethos of Exodus or have a negative impact on those they disciple (e.g. tv viewing and internet use).**
8. Be committed to a Biblical view on sexuality, namely that sexual intimacy is only to be expressed within marriage and between a man and a woman.
- 9. Refrain from forming dating relationships with another team member, leader or young person in the placement country.**
10. Set an example with, and ensure adherence to, the modest dress code.



# Hosting a Team

By welcoming a group of enthusiastic and prepared young people for 7-10 days, hosts can reach others in their community, energise local believers and play a part in the faith journey of the team.

**Sept-Oct**

Create a proposal for ministry, accommodation & transport using team request form.

**Mid Nov**

Agree details and costs with Exodus before team is advertised.

**Early March**

Exodus confirms the team has been recruited and summer prep commences.

**Late April**

Write preparation guide and day plan for the team.

**May-June**

Finalise the necessary logistics inc. food, accommodation, transport, ministry.

**July-August**

Host the team and providing ministry, food, accommodation & support.

**September**

Provide feedback for Exodus on the process.

**REQUEST  
A TEAM**

[exodusonline.org.uk/  
host-a-team](https://exodusonline.org.uk/host-a-team)



# Plan Your Team

Use this page to help you imagine what your Exodus team could look like, consider who'll be involved and spot where the gaps are.

Small Group Course: \_\_\_\_\_

Team Leader Name: \_\_\_\_\_

Co-worker Name(s): \_\_\_\_\_

Team members: \_\_\_\_\_  
\_\_\_\_\_

Meeting Location: \_\_\_\_\_

Meeting Night: \_\_\_\_\_

Potential Placement: \_\_\_\_\_

Placement Dates: \_\_\_\_\_

## NEXT STEPS

### Partner Teams

Once these details are clear, pass on the info to Exodus and we will send you a partner agreement to confirm the team.

### Leaders

Apply online, complete Access NI & record key dates.



# Key Dates



Be sure to put these important dates  
in your calendar!

**Recruiting Leaders, Hosts  
& Partner Teams**

Oct – Nov

**Leader Connect &  
Interview Night**

27th Nov – 1st Dec

**Meet The Leaders Events**

Mid Jan

**Early Application Deadline**

Mon 29th Jan

Team members applying later may  
experience limited availability

**Leader Reconnect Events**

Mid Mar

**Commissioning Service**

Sat 22nd Jun

**Summer Celebrations**

Late Aug

**Theme Launch**

Sat 25th Nov

**Team Member  
Applications Open**

Wed 13th Dec

**Team Leader Training**

Sat 13th Jan

**Team Meetings**

Feb – Jun

**Leader Placement Training**

Sat 18th May

**Teams Travel**

Jul – Aug





**exodusonline.org.uk**

hello@exodusonline.org.uk  
02892 661220  
@exodusdisciples

